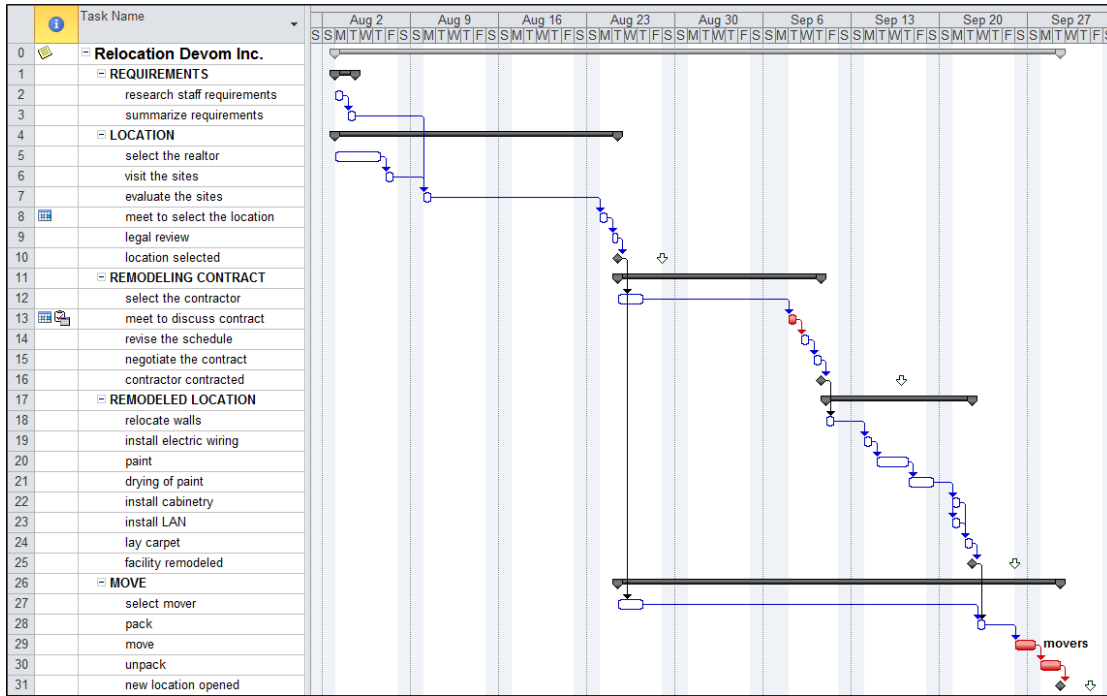


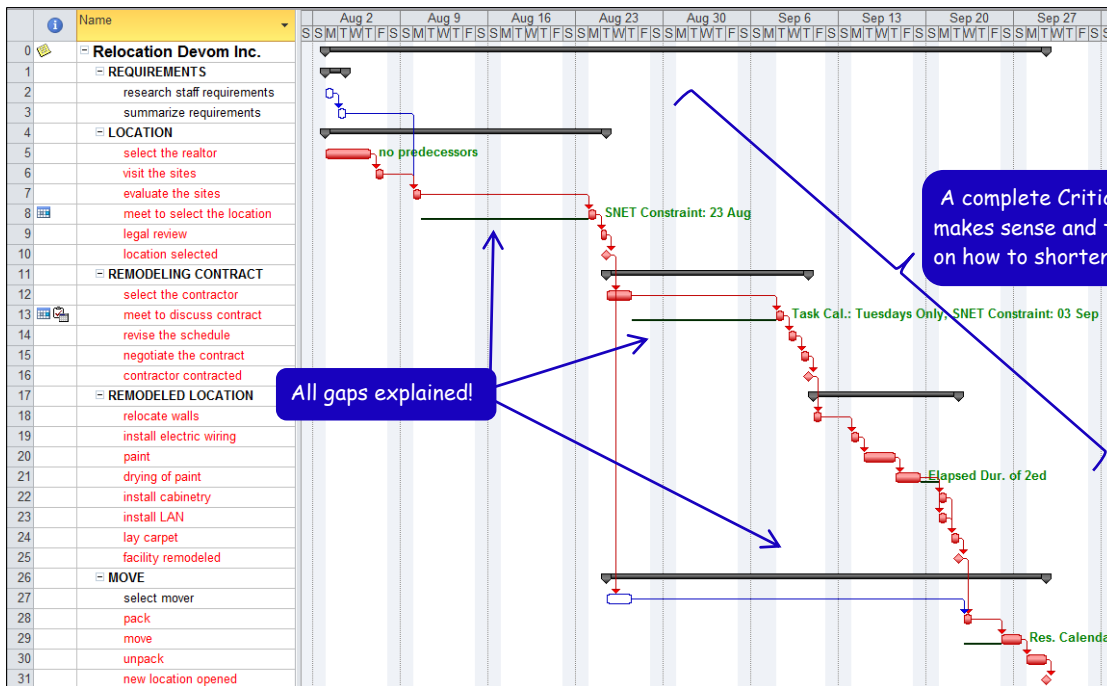
Would You Like to See a Complete Critical Path?

NEW!! PathsPro add-in for Microsoft Project

Many people know how to highlight the Critical Path in Microsoft Project, but their Critical Path often appears broken. In the next example, the Critical Path is incomplete; only tasks 13, 29 and 30 are colored red and critical:



Microsoft Project treats tasks as critical when their *Total Slack* (buffer) is zero or less. When you use features like calendars and hard dates in Microsoft Project, many tasks will have some Total Slack, which breaks the Critical Path. Our add-in, **PathsPro**, finds the complete Critical Path for you ... always! It will display it as:

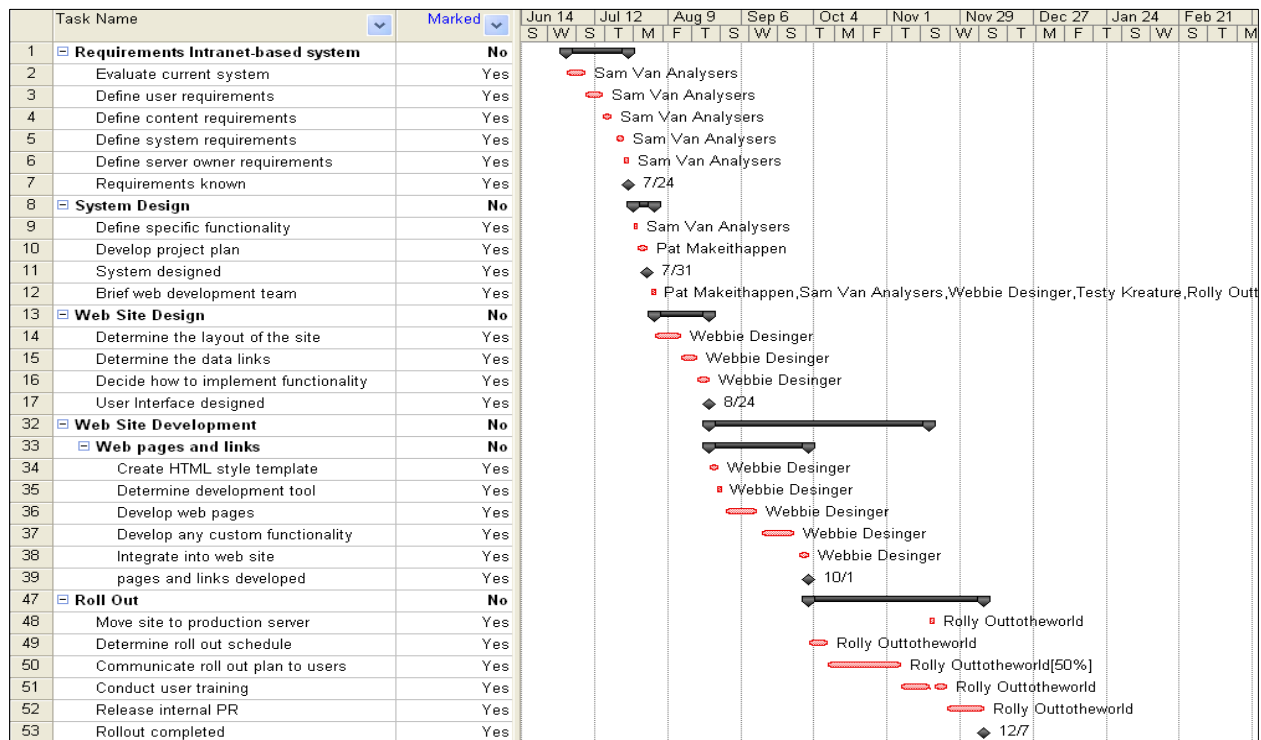


Note that **PathsPro** displayed a complete Critical Path. All gaps are depicted by green lines and explained in green text!

Our **PathsPro** will benefit you, if you experienced any of the following:

- **All tasks in my schedule are critical!** If you have challenging deadlines, all tasks in your schedule may turn red. Where should I start optimizing? What is my most-critical path?
- **I don't understand my Critical Path!** Why is this task on the Critical Path? Why is there a gap between critical tasks? Why is this critical task so long?
- **My Critical Path has huge gaps!** Why does the Critical Path in my schedule only explain parts of the project duration? Why do I not see a complete Critical Path that explains the entire project duration? Commonly used features (like hard dates, task/resource/project calendars and elapsed durations/lags) can cause these gaps.
- **I leveled the workloads and now my Critical Path is broken!** Do you have unlimited resources? Anybody? If you work with people who are not always available when you need them, you are in a resource-constrained project. When resources get overloaded and you level their workloads, the Critical Path will have huge gaps and explain only parts of the project duration. Our add-in will display the Complete Critical Path in your schedule, a.k.a. the Resource-Critical Path that explains your entire project duration.
- **I cannot find the Critical Path across my subprojects!** You have created links between projects and now you want to find the Critical Path to a major milestone in your large program schedule.

Our **PathsPro** will tell you who-is-critical-when if resources are in short supply, as shown in the next example:



As you can see, the entire project duration is explained thanks to **PathsPro** and suddenly makes sense. Ideas to shorten it start to flow.

The technical specifications of this add-in are:

- **PathsPro** version 2.0 works with Microsoft Project 2007 and later versions.
- **PathsPro** installs itself as a toolbar in Project 2007 and as a ribbon in Project 2010 or later.
- **PathsPro** makes MS Project compliant with Critical Path 2.0, the 2nd edition of the 50-year-old Critical Path theory.
- **PathsPro** brings Microsoft Project on par with Oracle Primavera that can perform the longest-path analysis.

So, we hope that you will:

- Buy our add-in **PathsPro** at www.ProjectProCorp.com/products.php, or
- Call **613-692-7778** or email Sales@ProjectProCorp.com for a 30-minute, online demo!